

# The partnership principle

a key to effective environmental  
training programmes

**Clare Feeney**



[www.clarefeeney.com](http://www.clarefeeney.com)



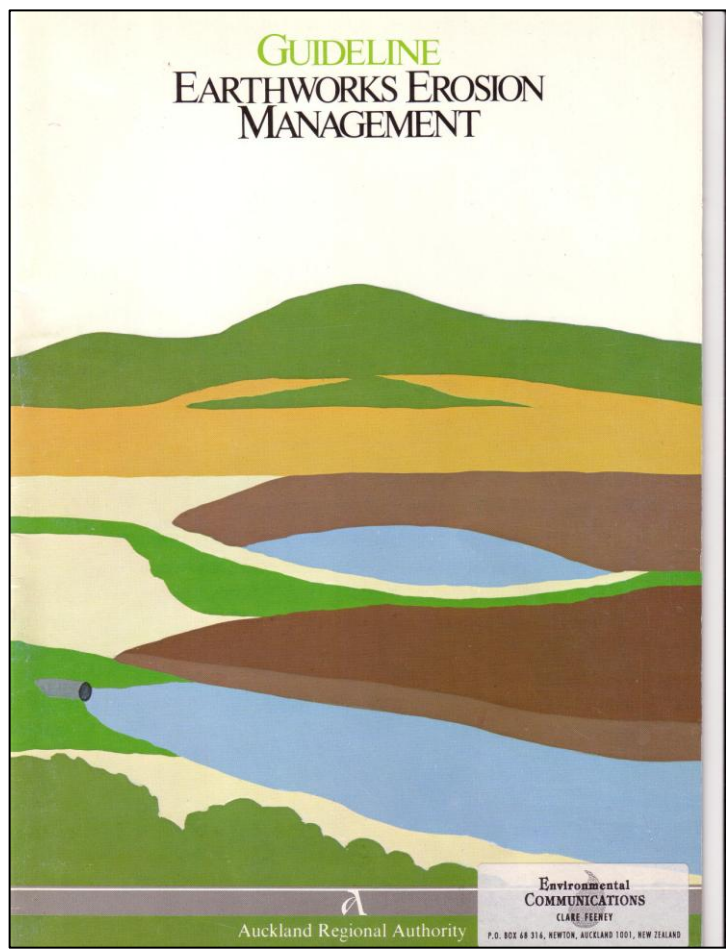
1959



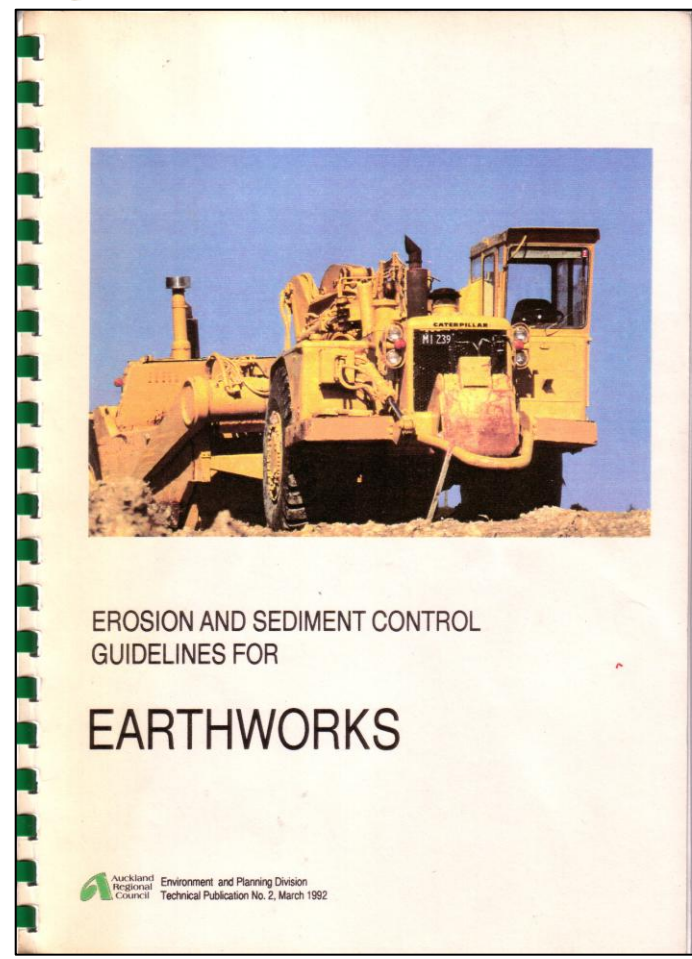




1983



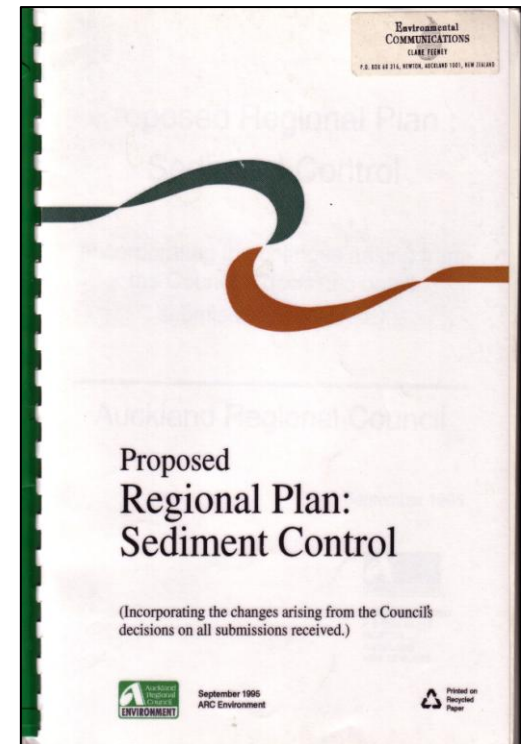
1992



1990



1995





1995



education

learning

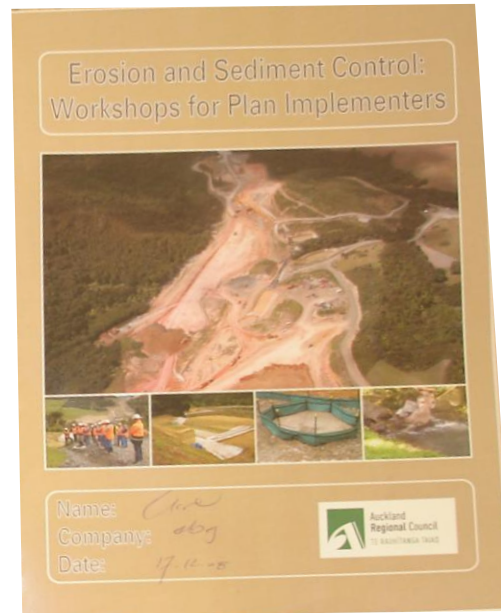
training

The acquisition of work-related knowledge, skills and practices that will improve a specified aspect of on-the-job environmental performance in measurable ways.

professional  
development

*awareness*





- 2-day workshop for consultants
- 1-day workshop for contractors
- 1-day workshop for council staff (new adopters)
- 6-8 other workshops now also available in Auckland

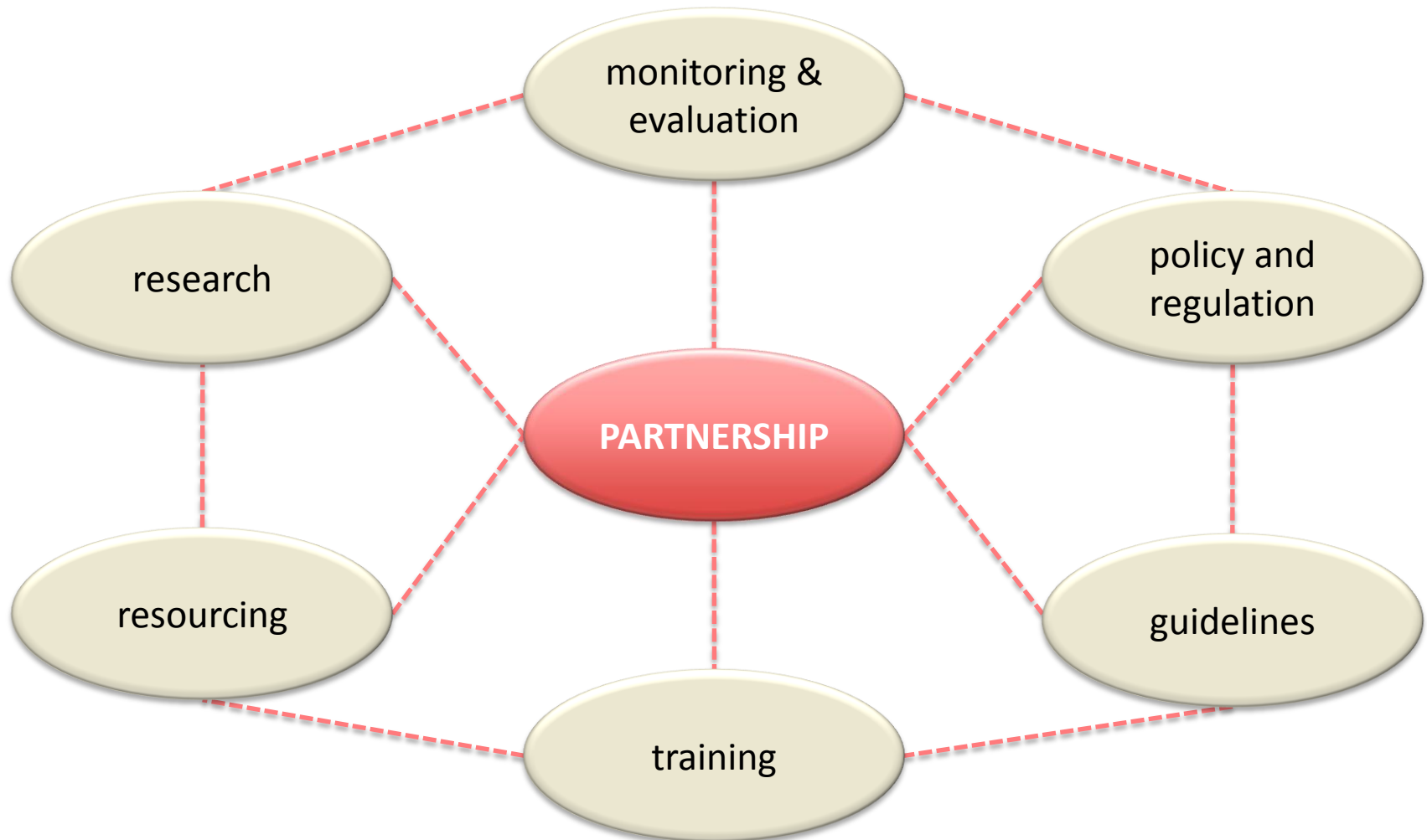


## Sediment Management Calendar of Events 2007 (Internal)

E - Newsletter	Internal Team Meetings	
Public Holiday	Guidelines completed	
Education Courses/Workshops	Industry Liaison Meeting	
External Courses/Processes	Process	

[illegible]

# What explains this success?





# Collaborative research and monitoring





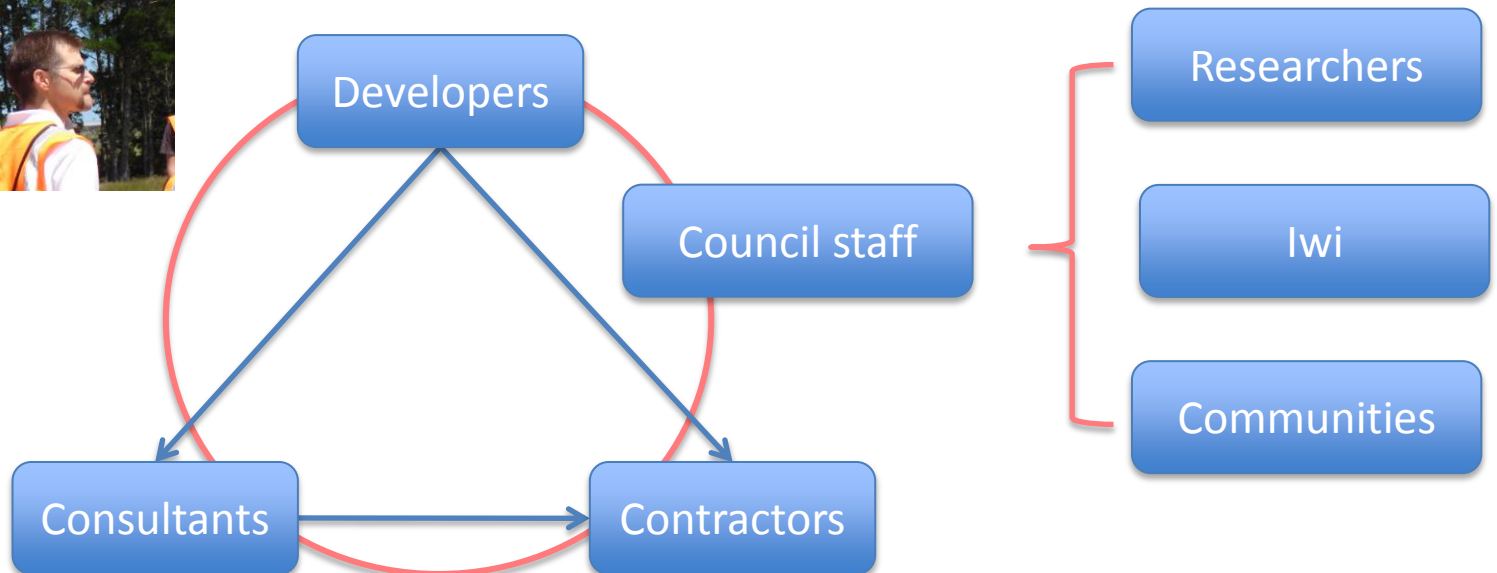
# Dissemination



# The ultimate measure of success

We built a whole new profession!

- environmental professionals on big construction sites





# Building capacity for sustainability

What these professionals do:

- intra-organisational capacity
- inter-organizational – strong working partnerships
- iwi and community – holding the public and private sector to account
- regulators, businesses, iwi and communities understanding each other's drivers and perspectives

A red, three-dimensional oval button with a white border and a slight shadow. The word 'PARTNERSHIP' is written in white, uppercase letters in the center of the button.

PARTNERSHIP

## PARTNERSHIP

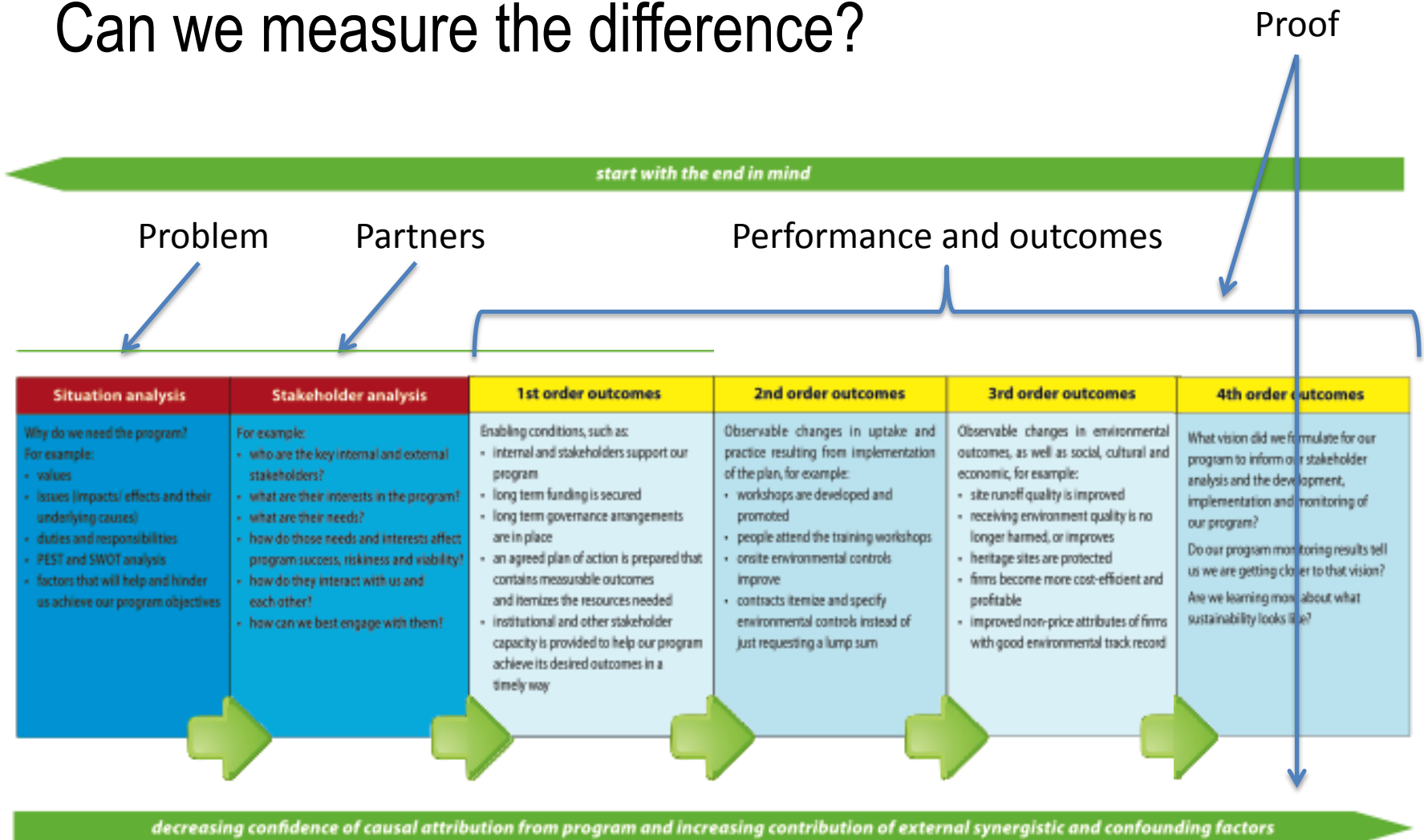
# How did they create it?

- did it right from the start
- kept it up over 15 years
- commitment
- commitment
- commitment
- a tale of two programmes



# Environmental outcomes

Can we measure the difference?





# The contribution of training

Seven levels of evaluating the effectiveness of training :

1. Reaction: Did they like it?
2. Learning: What did they learn from it?
3. Performance: What can they do as a result of it?
4. Results: Was the training worthwhile?
5. ROI: Did it produce a financial return on investment?
6. Sustainability: is it now 'how we do things round here'?
7. Sharing the benefit: it is helping others and the planet?





# THE RESTORATION ECONOMY

---

THE  
GREATEST  
NEW GROWTH FRONTIER

---

IMMEDIATE & EMERGING  
OPPORTUNITIES FOR BUSINESSES,  
COMMUNITIES & INVESTORS

**STORM CUNNINGHAM**







# In sum

A genuinely partnership-based adult vocational training programme – an invaluable tool in the environmental management and sustainability toolbox.







# The partnership principle

a key to effective environmental  
training programmes

*Thank you!*



Find out more at  
[www.clarefeeney.com](http://www.clarefeeney.com)